



Technical university of Košice, Faculty of Mining, Ecology, Process Control and Geotechnologies, Institute of Geosciences

University of Miskolc, Faculty of Earth Science and Engineering

Sapientia Hungarian University of Transylvania – Faculty of Economics, Socio-Human Sciences and Engineering, Department of Bioengineering and Department of Food Sciences, Miercurea Ciuc

Foundation for Groundwaters

LECTURES

of 14th International Scientific
Conference on Mineral Waters of the Carpathian Basin

BARDEJOVSKÉ KÚPELE, 22th – 24th August 2018



**Edited by: doc. Ing. Ladislav Tometz, PhD.
Ing. Dana Tometzová, PhD.
Ing. Diana Dirnerová, PhD.**

**© Institute of Geosciences, Faculty of Mining, Ecology, Process Control and,
Geotechnologies, Technical university of Košice**

ISBN 978-80-972639-1-1

CONTENTS

<i>Ladislav Tometz, Dana Tometzová</i> Hydrogeology of the Mineral Water Resources in Bardejov Spa.....	1
<i>Csaba Ilyés, Endre Turai, Péter Szűcs</i> Examination of the Hydrologic Cycles with Spectral Analysis.....	7
<i>László Lénárt</i> Unsuccessful wells and research drilling halted at incorrect depth in the Bükk Thermal Karst	16
<i>István Máthé, Lajos Vörös, Tamás Felföldi</i> Chemical and Microbiological Studies on the Special Aquatic Habitats of the Ciomad Volcanic Complex.....	43
<i>Rita Miklós</i> Delineation Possibilities of Potential Thermal Karst Water Flowpaths in the SE Part of Bükk Mountains, Hungary.....	57
<i>Diana Dirnerová, Ladislav Tometz</i> Protective Zones of Mineral Water Resources in Bardejov Spa.....	66
<i>László Lénárt</i> Thermal water and health spas displayed on postage stamps and postcards.....	77
<i>Zsombor Fekete, Csaba Ilyés, Roland Kilik, Ferenc Móricz, Endre Nádas, Gábor Nyiri, Marcell Szilvási, Péter Szűcs, Endre Turai, Péter Vass, Felicitász Velledits, Balázs Zákányi</i> Geothermal Utilization of Unproductive and Abandoned Wells in Northeast Hungary.....	107
<i>Réka Incze, Márta Tatár, Csaba Jánosi, Pál Kömény József, Nagy</i> Mofettes in Harghita County (Romania), Environmental and Human Health Aspects.....	115

GEOTHERMAL UTILIZATION OF UNPRODUCTIVE AND ABANDONED WELLS IN NORTHEAST HUNGARY

Zsombor Fekete¹, Csaba Ilyés^{1,2}, Roland Kilik¹, Ferenc Móricz¹, Endre Nádasi¹, Gábor Nyiri¹, Marcell Szilvási¹, Dr. Péter Szűcs^{1,2}, Dr. Endre Turai¹, Dr. Péter Vass¹,
Dr. Felicitász Velledits¹, Dr. Balázs Zákányi¹

***Abstract:** In this paper we present the current state of the PULSE project. The main goal of the project is to find new energetic use for abandoned and unproductive hydrocarbon wells. In the first phase of the project a comprehensive database is being built on abandoned and unproductive hydrocarbon extraction wells. We include those wells for which adequate amount of information is available. The potential of energetic utilization is to be evaluated based on the database. Energetic potential is to be determined for single wells and for some selected areas spatially. The methodology for potential evaluation is also being developed as part of the project. The final outcome will be a comprehensive database and a well-defined methodology for energetic potential evaluation. This will serve as a basis for in depth investigation if requested.*

Introduction

The Faculty of Earth Science and Engineering along with Research Institute of Applied Earth Sciences launched the PULSE project in 2016. The project is funded by the GINOP program. The project meets the objectives defined by the National Energy Strategy (MND, 2012). Namely, it targets the pillars “Security of energy supply” and “Sustainability” along with “Renewable energy sources”.

Out of the three modules of the project our team is involved in the third one, entitled “energetic utilization of unproductive and abandoned wells”. In this module a database of unproductive and abandoned hydrocarbon extraction wells is being built and an attempt is made to find new use of these, in the field of geothermal energetic applications. An other research direction in the module aims the undersurface storage of energy obtained from renewables or industrial waste heat.

The idea of geothermal utilization of hydrocarbon wells seems obvious if we consider the general temperature range of 65 - 150 °C of fluids extracted in oil fields (Liu et al., 2018). In spite of this, research of the topic have been started rather recently. First pilot tests for power generation have been initiated in the 2000’s in Wyoming, USA and Huabei, China.

*Egyetem, Környezetgazdálkodási Intézet, H-3515 Miskolc-Egyetemváros,
e-mail: zsomborpatlak@gmail.com*

² *MTA-ME Geoengineering Research Group*

Vast majority of geothermal power plants installed in developed oil fields use binary cycle systems. Direct utilization, with some exceptions, is also a rather newly discovered research field. Two recent reviews of Wang et al. (2018) and Liu et al. (2018) lists the already operating implementations.

In Hungary a research project regarding the geothermal usability of abandoned oil wells was initiated in 1995 by the Hungarian Oil Company (Árpási et al., 1997).

The first geothermal power plant was to be established in Iklódbördőce (Zala County). The draft included modification of two abandoned hydrocarbon extraction wells (Bobok and Tóth, 2007). One for thermal water extraction and one for reinjection. Due to the low water yield, the investment was not completed (Tóth, 2017).

Geothermal aspects of Northeast Hungary

The two main geographic landscapes of the northeastern part of Hungary are the North Hungarian Mountains (NHM) and the Great Hungarian Plane (GHP). The pre-Neogene basement is buried in the GHP to depths reaching 7000 m. Pre-Neogene, pre-Cenozoic rocks however are outcropping and forming partially the NHM. Miocene volcanic rocks are also widespread in the mountainous range.

Both the mountainous range and the basement of the basin reflects a complex geologic structure. The basement includes a variety of Mesozoic (carbonates, shallow and deep sea siliciclastic rock), Paleozoic (siliciclastic and low grade metamorphic rocks) and older (metamorphic) rocks. Large areas have a still unidentified basement. The southeastern border of the area overlaps the Mid-Hungarian fault zone (WSW-ENE), which divides the Alcapa and the Tiszia plates. Another important tectonic feature, the Darnó zone (SW-NE) is crossing the area at the NW ending of the Bükk Mountains. The thickness of Cenozoic sediments of the basement also shows a large range. The deepest part of the basement are reaching 4000 – 5000 m in the area.

For the purpose of the current phase of the project, two regions of interest had been delineated (ROI 1 and ROI 2, fig.2). The thickness of Neogene sediments in ROI 1 increases dramatically from NW to SE, up to 4500-5000 m. The central part is characterized by a chain of depressions (3000 – 3500 m depths) elongated in SW-NE direction, followed to SW by a slightly elevated ridge (1000 – 1500 m depths) of the same direction. In case of ROI 2 the deepest parts are found in the center (~4000 m) and the northern edge (~5500 m) of the region. Towards the boundary the thickness of sediments generally are decreasing to about 1500 – 2000 m.

The Neogene sediments are mostly composed of river deposits (gravel, sand, clay, loess). In the northern part of two region of interest other types of rocks are also found. These zones are overlapping with the mountainous range and the feet of them. In case of ROI 1 Miocene acidic tuffs (of riolite, dacite and riodacite) are present on the surface of the northwestern part. In ROI 2 pyroxene and amphibole andesite and sandstone is found on the surface, both of Miocene age.

Generally speaking, Hungary may be characterized by a high geothermal gradient (of about 50 °C/km) due to the relatively thin crust. The actual spatial distribution of the geothermal gradient roughly reflects the geologic structure of the country. The region of interest of current project is characterized by values between 55 and 70 °C/km. The heat flow in the area varies between 80 and 110 mW/m². Rock temperature under such conditions may range between 50 - 80 °C in 1000 m depth and 90 - 120 °C in 2000 m depth (Dövényi et al., 1983).

Although a few wells have been drilled in the 19th century, the large scale exploration in the area began in the 50's. The majority of the wells are of hydrocarbon exploration and water wells. Exploration specifically for thermal water also dates back to the middle of the last century but it expanded in the last few decades.

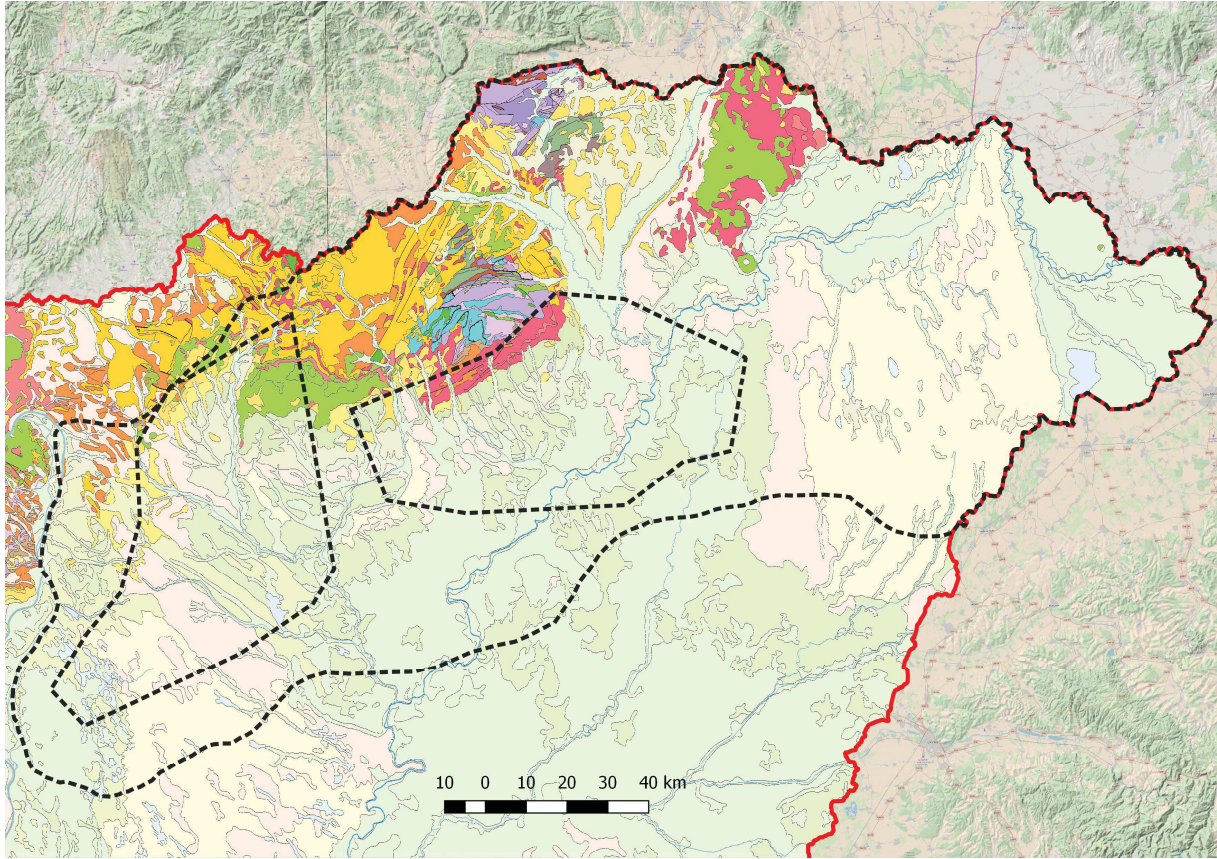


Fig. 1: Geologic map of Northeast Hungary, showing the regions of interest. (Source: MBFSZ, 2017)

Database

One main pillar of the research work is the database of abandoned and unproductive hydrocarbon wells which has a theoretical potential of geothermal energetic use. The starting point of the database included three sources, namely:

- Geothermal survey of Hungary (Tóth, 2016)
- Database of unproductive hydrocarbon wells in the Bükk region
- Cadaster of Hungarian thermal water wells (VITUKI, 1994, MFGI, 2015)

The Geothermal survey of Hungary includes basic data (name, identification code, coordinates, depth and year of construction, bottomhole and wellhead temperature) of 1704 wells from all around the country. 1540 wells were originally drilled for geothermal purpose and 167 were drilled for hydrocarbon exploration or extraction. All of them are considered to be potentially used with geothermal function. The previously gathered data of hydrocarbon wells in the Bükk region includes 443 wells with more detailed description (like geologic profile, casing and screening, flow rates and water levels). The Cadaster of Hungarian thermal water wells is a large series, at the moment edited by the Mining and Geological Survey of Hungary. It also includes a details of every thermal water wells drilled in the country. The complete detailed description is however only available in the well log-books. Therefore the database is not considered complete yet. It will be supplemented by the well log-books. In this process many geophysical logs will have to be reinterpreted.

The requirements on the database is to include every useful data about the structure of the well, the geologic profile, hydrogeological properties, testing results and temperature regimes. Availability of detailed description of the structure of existing wells are essential if geothermal application is considered. To handle this amount of complex information a relational database will be designed. The complexity is also reflected by the first drafts of the database scheme.

For the purpose of the project, the database includes highly detailed data for two selected area in Northeast Hungary. For wells outside the two region of interest only the basic dataset will be available. The procedure of delineating the area of interest and the first results of analyzing the database are described in the next section.

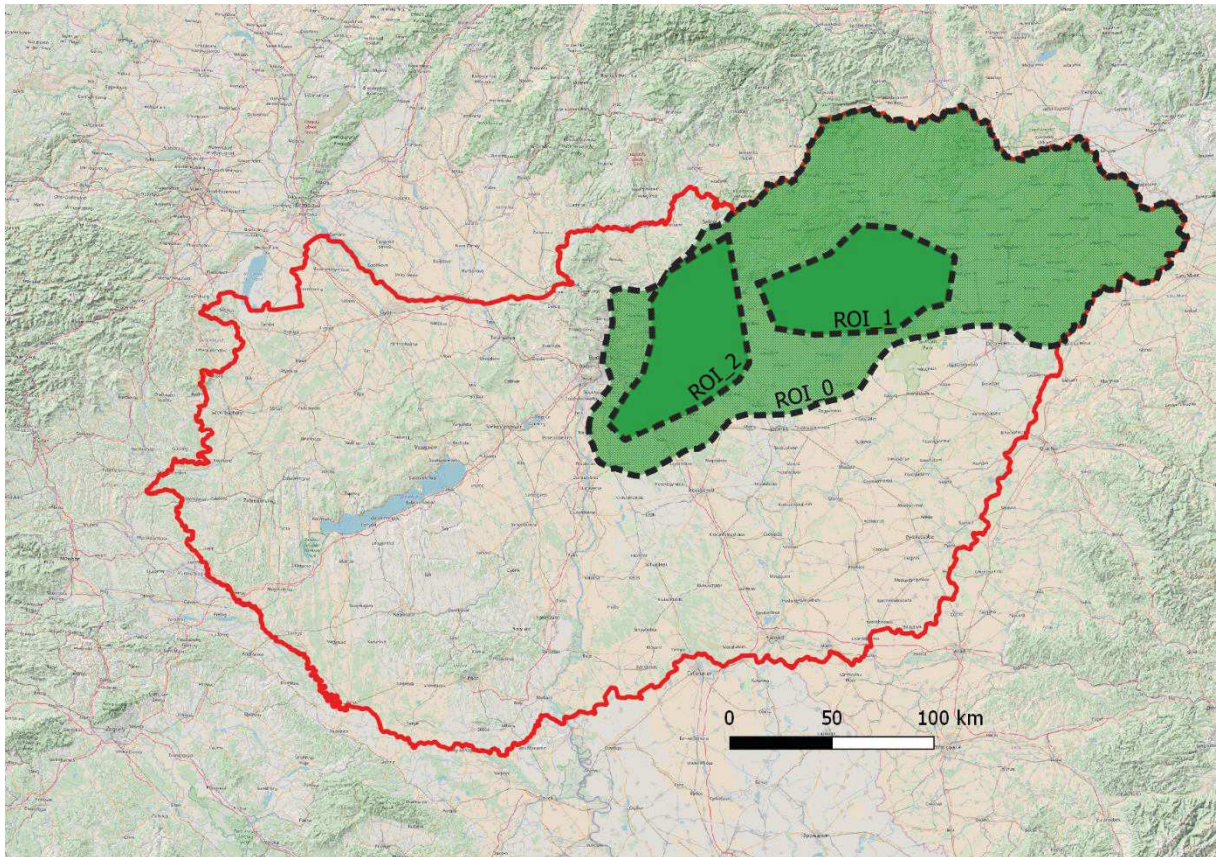
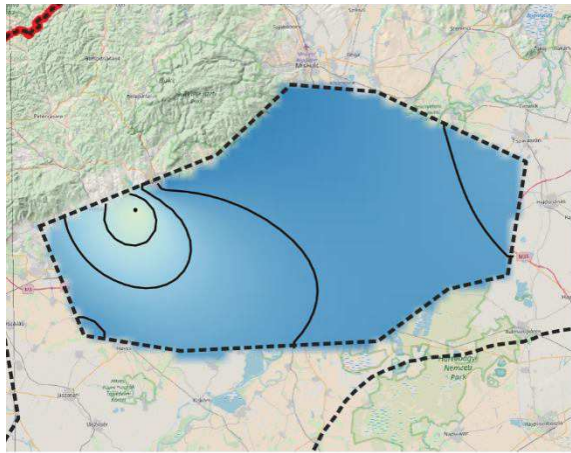


Fig.2. Regions of interest delineated for detailed database

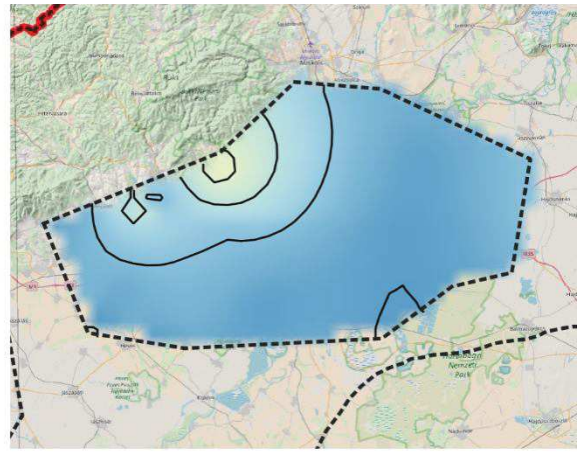
Results in the region of interest

As the work implies a vast labor of database building, two region of interest had been delineated (ROI 1 and ROI 2). The initial area extended over Northern Hungary, and parts of Northern Great Plane and Central Hungary. Inside this area two smaller region of interest had been delineated (map on figure2.). The delineation was based on geologic considerations and on former analysis of demands on geothermal energy. The two area of interest includes the following small regions:

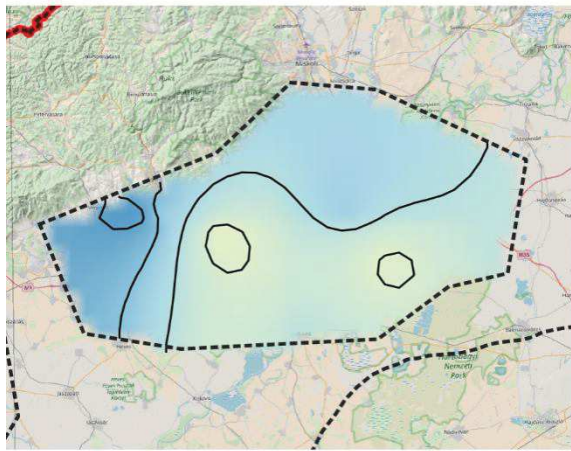
- Bükkalja, Borsodi-Mezőség, Hevesi-sík
- Gödöllői-dombság, NW part of Jászság, Mátraalja, Cserhátalja, SW part of Pesti-síkság



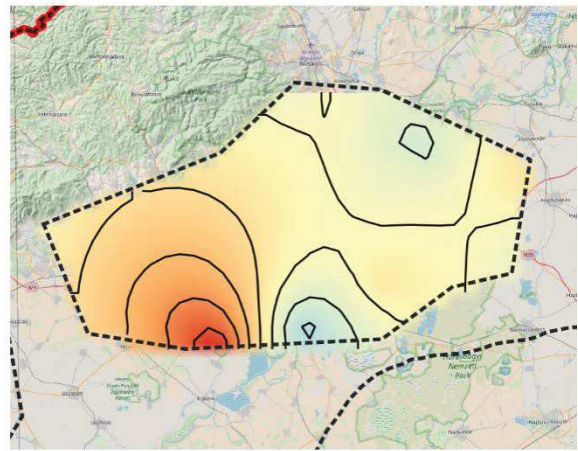
0 - 400 m



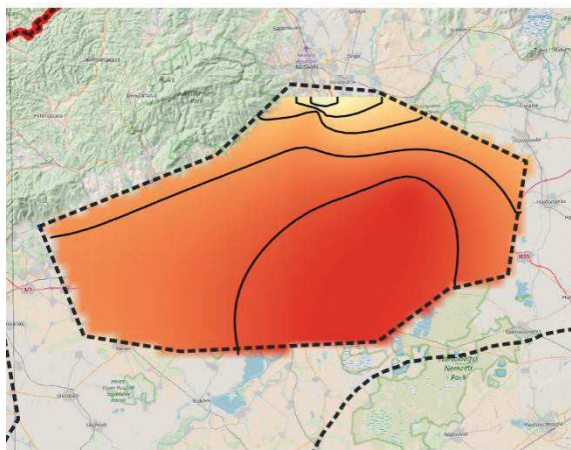
400 - 700 m



700 - 1000 m



1000 - 1500 m



1500 - 2500 m

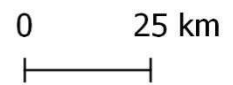


Fig. 3. Temperature distribution in different depth intervals inside ROI 1

These includes a number of 955 respectively 141 wells in the database at the moment.

During the project the database construction and the analysis is to be performed on the two area of interest. The methodology which is also developed as part of the project will be applicable also outside them upon third party requests.

During and after the database building it was found that many wells will have to be neglected during the work. The reason of it is that the documentation of many wells lacks some important data. Hopefully the following data supplements will reduce the number of these data gaps. For this reason some geophysical logs and other measurements will be reinterpreted in a later phase of the project. For some parameters or properties, estimation methods will be used, however the data obtained this way will handled aware of its uncertainty.

After the first stage of database building, the already available information is being used for a detailed geothermal characterization of the region of interest. The depth and thickness map of geologic (geochronological) units have been created. The most important results are the temperature distribution maps for different depths and different geologic units. An example for ROI 1 is presented in figure 3.

Heat storage in geologic formations

In addition to geothermal energy production, the research also focuses on the possibility of energy storage in geologic formation. For this, the source of energy may be a renewable or industrial waste heat. Progress have also been made in this research direction. Two starting points were the review of literature and construction of idealized conceptual models. The conceptual models are used to simulate the heat transfer and storage in a theoretical case. The aim of simulating theoretical test cases is to identify factors affecting the possibility of heat storage and to determine the ideal conditions for it.

Later adequate flow and transport model for a few actual test sites will be built. The selection of test sites will partly be based on the conclusions of the conceptual models.

The first theoretical test case represents a porous media flow model for a depth of around 500 m. This resembles the geological, hydrogeological conditions of a large industrial site in Tiszaújváros. The industrial plant serves as the source of waste heat.

Conclusions and further work

A large database of wells of potential geothermal use have been built and will be supplemented in the near future. The database includes abandoned and unproductive hydrocarbon wells and many already used geothermal and water wells. Information on geologic strata, temperatures, flow rates, water chemistry as well as screening and casing is found in the database. The dataset serves as basis for geothermal assessment of some selected areas. Twofold analysis will be made: localized in a well scale and regional, which finally may lead to further geothermal developments.

Based on data availability, geologic and infrastructural considerations, two region of interest have been delineated. This takes into account the previously formulated demands on geothermal energy.

The analysis and interpretation of the database gave insight into geothermal conditions of the regions of interest. As the database will be supplemented with further details, it will allow the proper geological, technical and economical assessment of possible geothermal developments.

As an alternative solution, the heat storage in underground media is also being inspected. This may improve the reliability of renewables and may enhance the use of waste heat in industrial sites. The first simulations in this respect have also been started. The flow and heat transport simulation resembles the geologic and hydrogeologic conditions of a large industrial site nearby (in Tiszaújváros). The simulation domain extends 500 m deep and is composed of porous medium.

In the near future, in a following stage of database building, an extensive completion of the database will be proceeded. This certainly imply the modification of the current database scheme. The development of a step-by-step methodology of well scale and regional scale geothermal assessment is on the way. Currently the two selected ROIs are being investigated. After that an almost algorithmical description of the methods will be formulated.

Acknowledgement

The research was carried out with the support of the GINOP-2.3.2-15-2016-00010 “Development of enhanced engineering methods with the aim at utilization of subterranean energy resources” project of the Research Institute of Applied Earth Sciences of the University of Miskolc in the framework of the Széchenyi 2020 Plan, funded by the European Union, co-financed by the European Structural and Investment Funds.

References

- ÁRPÁSI, M., PÓTA, Gy., ANDRISTYAKÁ, A., 1997: Geothermal pilot projects on utilization of low-temperature reserves in Hungary. *Geothermal Resources Council Transactions*, 21, pp. 327-330
- BOBOK E., TÓTH A., 2007: First geothermal pilot power plant in Hungary. *ActaMontanisticaSlovaca*, 12(1), 176-180
- DÖVÉNYI, P., HORVÁTH, F., LIEBE, P., GÁLFI, J., ERKI, I., 1983: Geothermal conditions of Hungary. *Geophysical Transactions*, 29(1), pp. 3—114
- LIU, X., FALCONE, G., ALIMONTI, C., 2018: A systematic study of harnessing low-temperature geothermal energy from oil and gas reservoirs. *Energy*, 142, pp. 346–355
- TÓTH, A., 2016: Magyarországgeotermikusfelmérése, Magyar EnergetikaiésKözműszabályozásiHivatal, ISBN 978-963-12-7712-8
- TÓTH, A., 2017: Zalamegye geotermikus viszonyai. *Műszaki Földtudományi Közlemények*. 86(2), pp. 180–187
- WANG, K., YUAN, B., JI, B., WU, X., 2018: A comprehensive review of geothermal energy extraction and utilization in oilfields. *Journal of Petroleum Science and Engineering*, 168, pp. 465-477
- MBFSZ, 2017: MBFSZ MAP SERVER. <https://map.mbfisz.gov.hu> (accessed in July 2018)
- MFGI, 2015: Magyarországhevízktjtjai VII. kötet kiegészítése javításokkal. Magyar Földtani és Geofizikai Intézet (MFGI), 2015
- MND, 2012: National Energy Strategy 2030, Ministry of National Development, 2012, ISBN 978-963-89328-3-9, http://www.terport.hu/webfm_send/2658 (accessed in July 2018)
- VITUKI, 1994: Magyarország Hévízktjtjai VI. kötet. Vízgazdálkodási Tudományos Kutató Rt. (VITUKI Rt.), 1994